



e-TRACKER_{Mk2}

Descriptive and Application Information

plotting to cut energy bills!

Magnetic Back

RS232 to PC

Multiple Memory Locations

Pulse input. Optical meter reader option

Amps range scaling multiplier

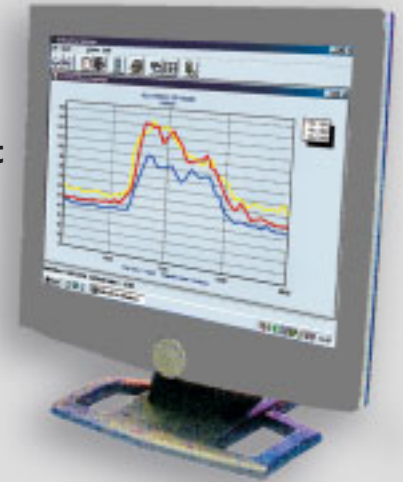
Clip-On CT's

HV Interface

Flexeclamp CT's



USB Port Option



Analysis Software

EV-Trac electrostatic phase identifier

16 day Battery only operation



Voltage Clips (Optional use)



SINERGY Ltd Station Rd. Strines
Stockport SK6 7GP England
Tel 01 663 764 833. Fax 01 663 765 885
e-mail: info@sinergy-meters.com
web: www.sinergy-meters.com

connection options

Safe - Practical - Accurate

Use Tracker with it's fused voltage clips for maximum accuracy on all parameters (fig a)

or

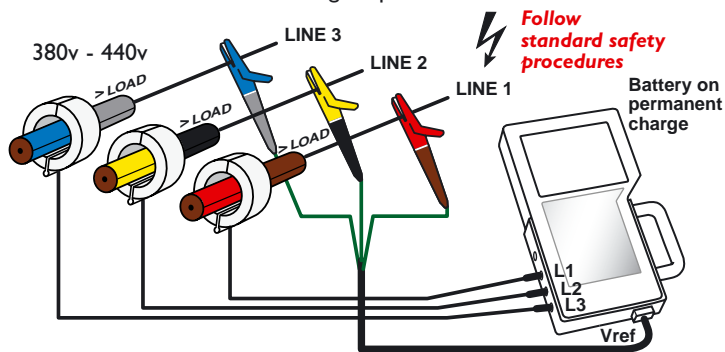
EV-Trac 3 phase volt reference conversion from a single phase socket outlet. (fig b)

or

Battery only operation measuring current and calculating KVA demand profiles. (fig c)

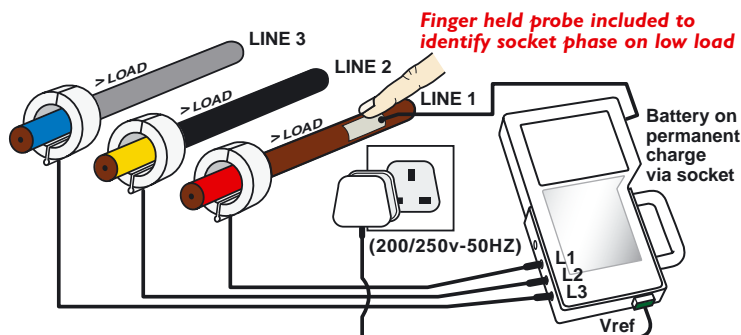
a) 3Ø direct voltage measurement

All CTs to face same way, CT colour must match colour coded voltage clips



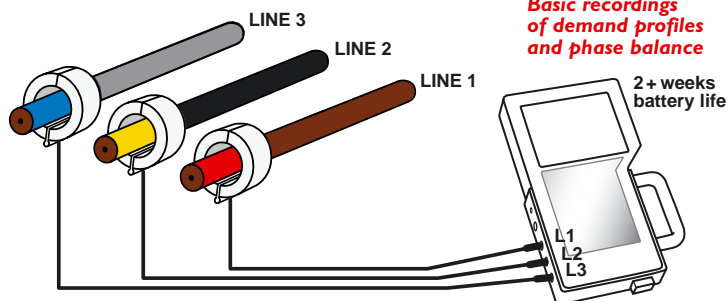
b) 3Ø ev trac voltage pickup

1Ø to 3Ø voltage synthesis

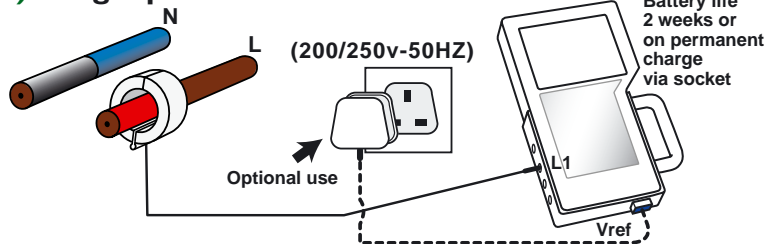


c) 3Ø current recording

with calculated KVA demand profile

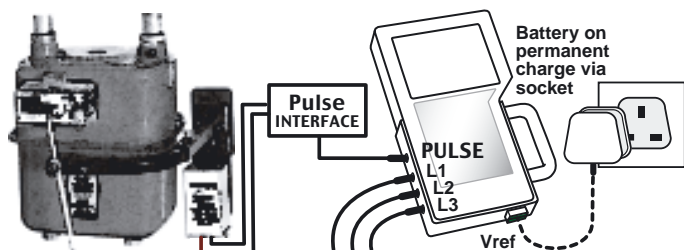


d) Single phase



e) Pulse Counter

Magpeye requires separate supply



f) Pulse count + analogue connection

EV-Trac Installation examples



Tracker magnetically clamps to the transformer housing and tracks the voltage at the socket.

The 3 phase vectorial equivalents are calculated then assigned to the appropriate measured current phases, thus maintaining Power Factor accuracy.

Where load current is too low for auto identification, Tracker will request the use of its EV-Trac Probe. This is simply touched to the cable insulation for the display to indicate the phase identity L1, L2 or L3.



Pulse interface (option) The battery operated isolated interface unit enables Tracker to record volt free pulse outputs from water, gas, electricity or optical meter readers, (Magpeye).



The interface may be used at the same time that normal analogue recording is in progress.

The selected integration period must be greater than 1 minute and the same for both pulse and analogue modes.

These diagrams are for illustrative purposes, please refer to the equipment marking and instruction card when fitting